

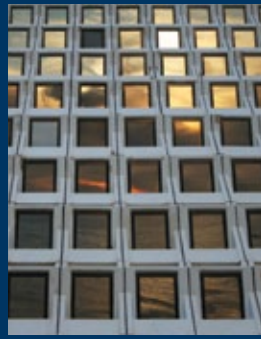


CONSTANTINE®

**BROAD WEAVE**

Large Scale / Small Scale

Milliken™



## INSPIRED. INSPIRING.

Life in an office building. The first wave of workers arrives. Lights pop on. Computers and printers hum to life. The full measure of humanity pulses through it all day long. It is far from a lifeless structure of steel and glass and concrete. There is untold beauty in the way these structures serve us.

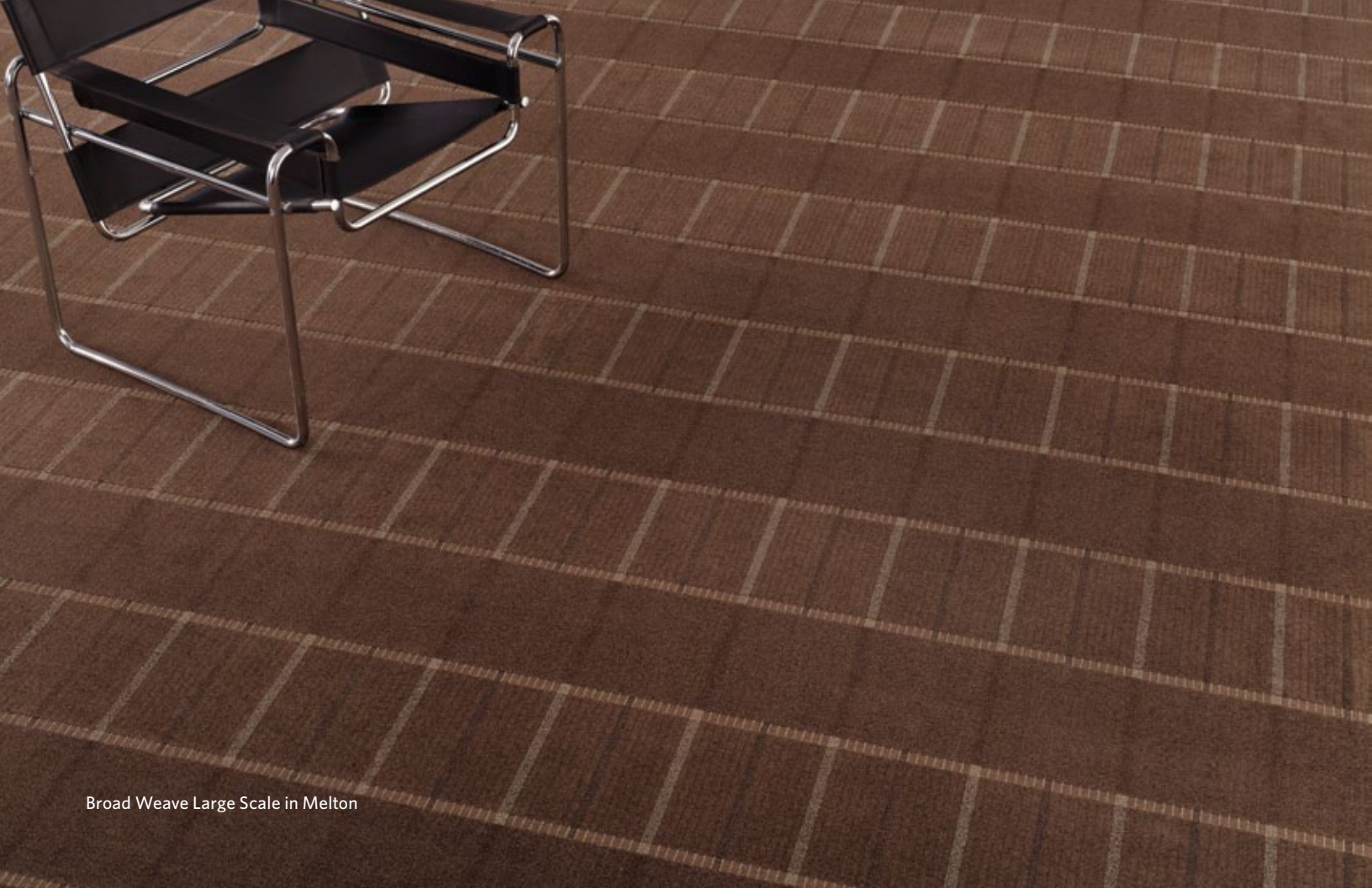
Get more at [millikencarpetsamplestudio.com](http://millikencarpetsamplestudio.com)



Broad Weave Large Scale in Melton



Broad Weave Small Scale in Melton



Broad Weave Large Scale in Melton

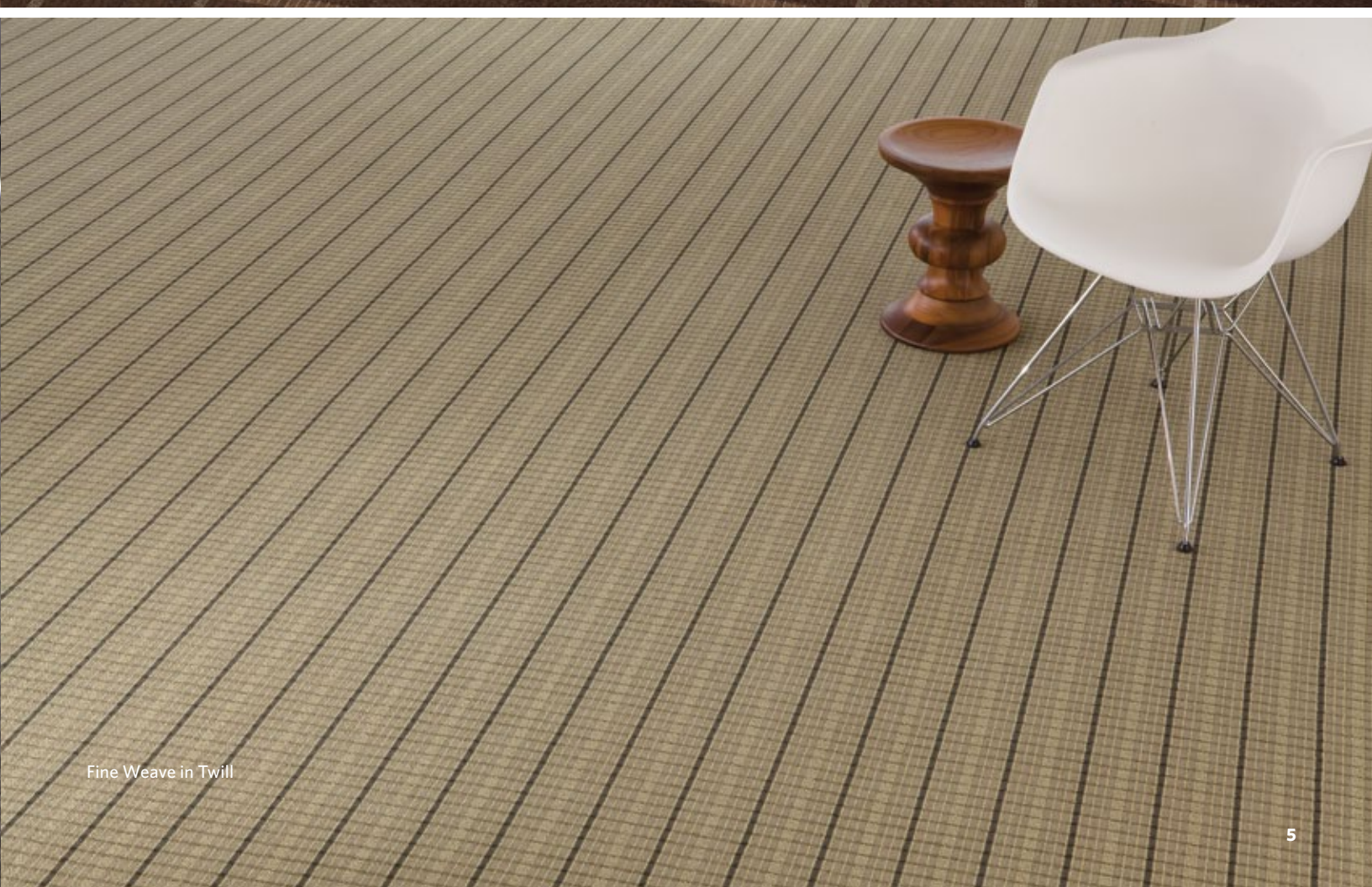


Broad Weave Small Scale in Melton

Get more at [millikencarpetsamplestudio.com](http://millikencarpetsamplestudio.com)



Plaid Weave in Stranded



Fine Weave in Twill

The Broad Weave Collection is a classic pattern offering a new point-of-view of a plaid. Created using our Color Reference system, the Broad Weave Collection coordinates with Plaid Weave and Fine Weave to provide transition options and varying scale within a project. Available in 16 standard colors, Broad Weave can be custom-colored with a minimum order.



\*K69 SUEDE



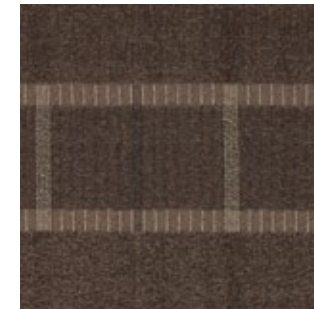
\*Q57 VICUNA



B112 BUCKRAM



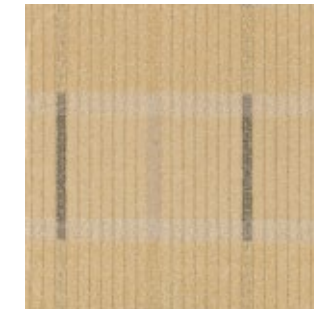
\*N54 PONGE



\*W59 MELTON



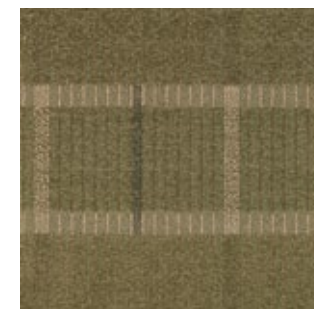
A39 CASHMERE



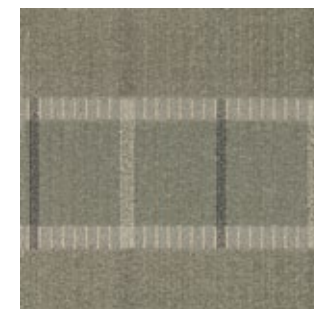
\*L75 RAMIE



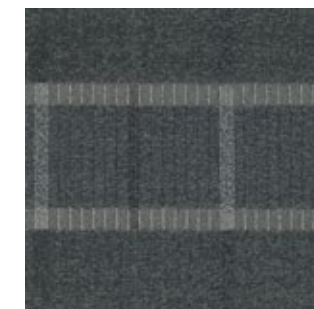
\*Q14 CALLIS



P28 LODEN



B43 GRENADINE



\*M53 SHARKSKIN



B118 TAFFETA



A45 MADRAS



\*L86 TUSSAH



A106 PLISSE'



\*K79 FLANNEL

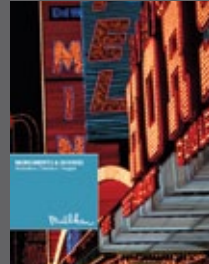
\* Denoted colors coordinate exactly across all three products: Broad Weave, Plaid Weave & Fine Weave.

# Broad Weave

Have you seen our other collections? Visit us online today.



Windows



Monuments & Shrines



## Construction

Tufted, Patterned Cut & Loop

## Pattern Repeat (Large Scale)

61 cm. x 40.6 cm. (24 In. x 16 In.)

## Pattern Repeat (Small Scale)

30.5 cm. x 20.3 cm. (12 In. x 8 In.)

## Broadloom Width

3.66 m. (12 Ft.)

## Yarn type

100% Ultron® Type 6,6 Nylon

## Stain repel / stain resist / soil release

Permanent Static Control,  
Commercial Carpet Protector &  
Stainguard Protection

## Tufted face weight

39 oz./Sq.Yd. (1,322.4 G./Sq.M.)

## Pile height

0.219 In. (5.56 mm.) Average

## Average density

6,411

## Standard backing

Endura-Loc™ High Performance  
Primary Backing System with 18 x 8  
lino woven latex secondary backing.

This Endura-Loc™ broadloom carpet product is covered by one or more patents, published applications and/or patents pending. Specifications are subject to normal manufacturing tolerances and may be changed without prior notice.

## Recommended installation method



BROADLOOM



Gold of Platinum Certified  
NSF/ANSI 140-2007a  
Commercial Carpet Installation



**Growing greener for over 100 years.**

Visit [milliken.com](http://milliken.com) for more information.